

SH2 18X3 ST (919 013)

- Extremely space-saving
- With two-sided contact
- For 35 mm DIN rails acc. to EN 60715

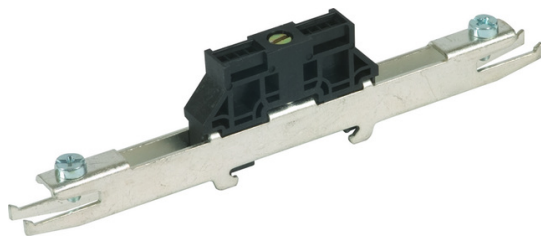
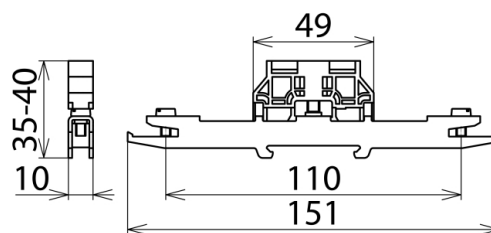


Figure without obligation



Dimension drawing SH2 18X3 ST

Rail support suitable for DIN rail mounting. Low-impedance connection of the shield terminals to the DIN rail via the busbar.

Type	SH2 18X3 ST
Part No.	919 013
Version	two-sided contact
Material	tin-plated steel
For mounting on	35 mm DIN rails acc. to EN 60715
Weight	55 g
Customs tariff number (Comb. Nomenclature EU)	85389099
GTIN	4013364071582
PU	1 pc(s)

We reserve the right to introduce changes in performance, configuration and technology, dimensions, weights and materials in the course of technical progress. The figures are shown without obligation.